

# HOLIDAY FLOWER FAIRIES PANEL



Size: 41" x 52"

Quilt designed by Marinda Stewart  
Level: Beginner



118 West 22nd Street 5th Floor New York, NY 10011  
Tel: 212.704.0774 Fax: 212. 633. 0272 email: [info@michaelmillerfabrics.com](mailto:info@michaelmillerfabrics.com)

[www.michaelmillerfabrics.com](http://www.michaelmillerfabrics.com)



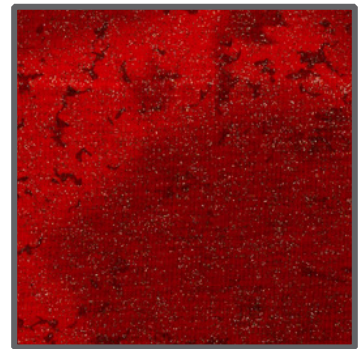
# FABRIC REQUIREMENTS



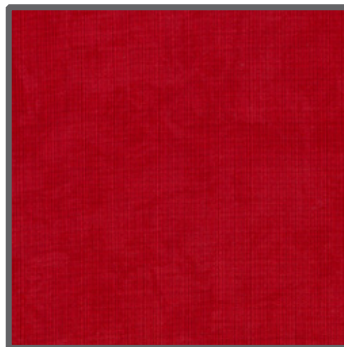
**DC5537 Red  
Holiday Fairies Panel**  
2/3 yard



**DM5406 Red  
Holiday Fairies**  
1 1/2 yards



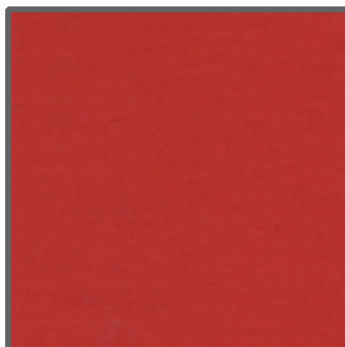
**CM0376 HollyBerry  
Fairy Frost**  
1/6 yard



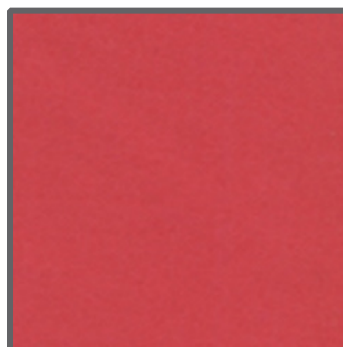
**K2149 Krystal  
(Dark Red)**  
1/2 yard



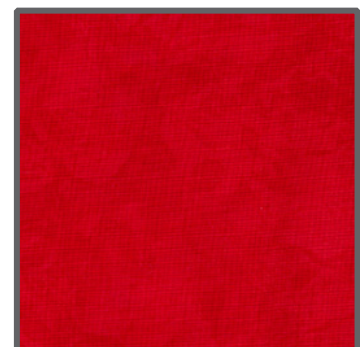
**CM0376 Asparagus  
Fairy Frost**  
9" x 15" piece



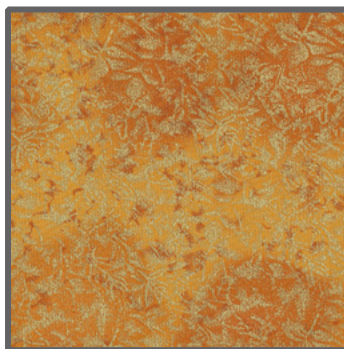
**SC5333 Cherry  
Cotton Couture**  
9" x 15" piece



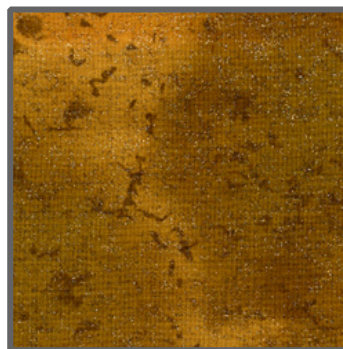
**SC5333 Watermelon  
Cotton Couture**  
9" x 15" piece



**K1149 Krystal  
(Red)**  
9" x 15" piece



**CM0376 Amber  
Fairy Frost**  
3" square



**CM0376 Garland  
Fairy Frost**  
3" square



**SC5333 Kryptonite  
Cotton Couture**  
3/8 yard

**Backing & Batting 45" x 56"**

## "Holiday Flower Fairies Panel"

Quilt by Marinda Stewart

Size: Approximately 41" x 52" Skill Level : Beginner

### Materials

Fabric	Yardage	Cutting
<b>* DC5537 Red Holiday Fairies Panel</b>	<b>2/3 yard</b>	(1) panel 22 1/2" W x 43 1/2" H
<b>** DM5406 Red Holiday Fairies</b>	<b>1 1/2 yards</b>	(2) 5 1/2" W x 43 1/2" H (1) 4 1/2" H x 41 1/2" W (1) 5 1/2" H x 41 1/2" W
<b>CM0376 HollyBerry Fairy Frost</b>	<b>1/6 yard</b>	(2) 1" x 41 1/2" (2) 1" x 43 1/2" (pieced for length)
<b>K2149 Krystal (Dark Red)</b>	<b>1/2 yard</b>	(5) 2 1/2" x W.O.F. - binding (3) Large petals (3) Small petals
<b>CM0376 Asparagus Fairy Frost</b>	<b>9" x 15" piece</b>	(3) Large leaves (3) Small leaves
<b>SC5333 Cherry Cotton Couture</b>	<b>9" x 15" piece</b>	(3) Large petals (3) Small petals
<b>SC5333 Watermelon Cotton Couture</b>	<b>9" x 15" piece</b>	(3) Large petals (3) Small petals
<b>K1149 Krystal (Red)</b>	<b>9" x 15" piece</b>	(3) Large petals (3) Small petals
<b>CM0376 Amber Fairy Frost</b>	<b>3" square</b>	(12) Assorted circles
<b>CM0376 Garland Fairy Frost</b>	<b>3" square</b>	(12) Assorted circles
<b>SC5333 Kryptonite Cotton Couture</b>	<b>3/8 yard</b>	(2) 4 1/2" x 43 1/2"

\* It will be necessary to use some of the selvage edges to get the 43 1/2" measurement.

\*\* One way print. Extra yardage is needed to keep the motifs upright

#### Also Needed:

45" x 56" backing, 45" x 56" batting, threads to match, scissors, straight pins, acrylic ruler, rotary cutter, mat, fusible web, and (recommended) iron-on tear away stabilizer for the applique.

## Disclaimers

This pattern is provided as a courtesy to quilt stores, catalogs, and quilters. Michael Miller Fabrics, LLC is not responsible for the accuracy of any kits packaged to accompany this pattern. Please direct any inquiries to the kit maker.

Yardage requirements for this pattern may allow for excess yardage to accommodate specific placement of motifs or to allow for any fussy-cutting to achieve the finished quilt design.

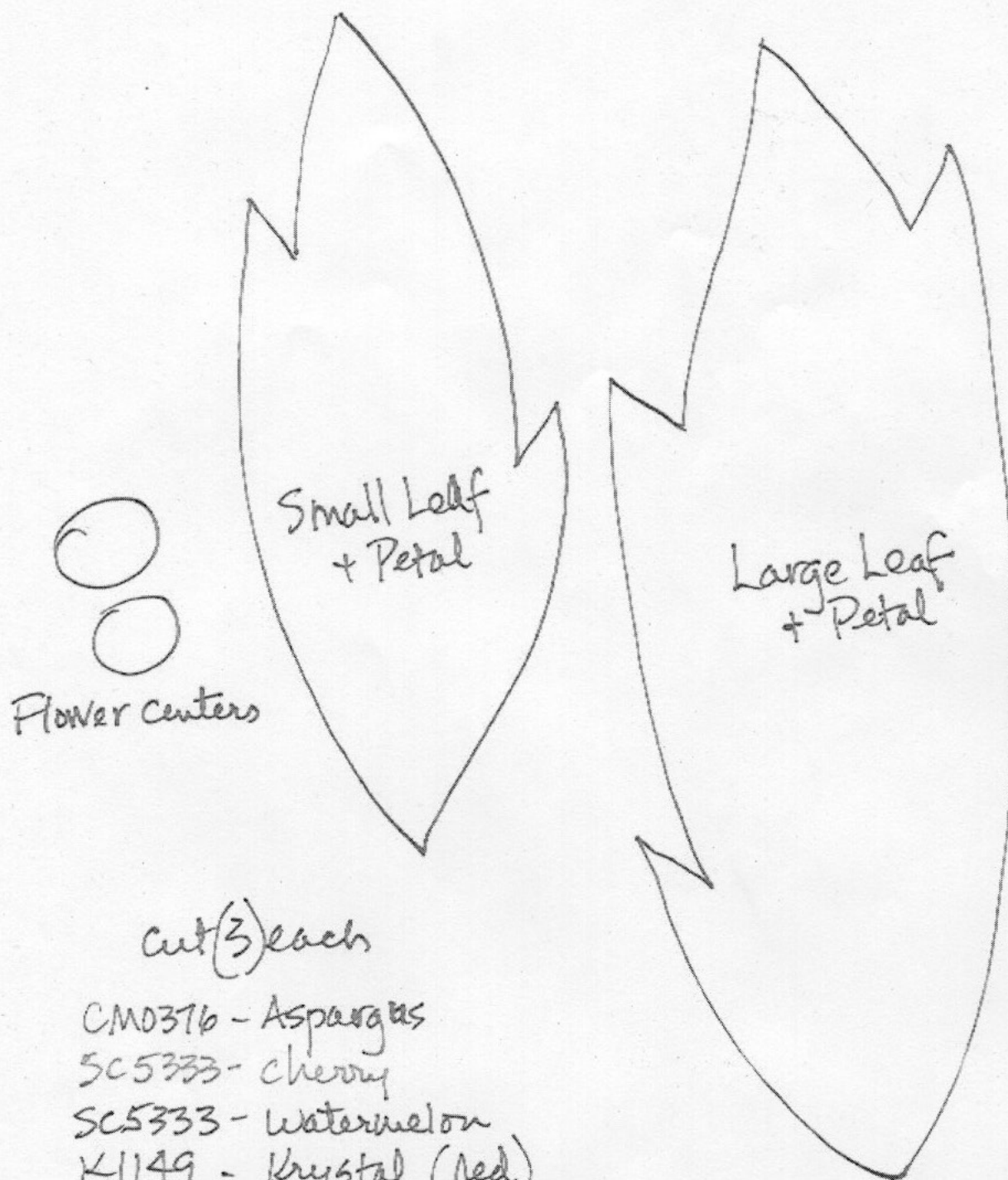
While every attempt has been made to give accurate measurements, yardage requirements, and construction directions; this does not allow personal variations in measuring, cutting, and or sewing. The enclosed directions were used in the construction of the original quilt.

## Directions

1. Sew one SC5333 Kryptonite 4 1/2" x 43 1/2" piece to each side of the DC5537 22 1/2" x 43 1/2" panel.
2. Sew one CM0376 HollyBerry 1" x 43 1/2" (pieced for length) to each side of the quilt top.
3. Sew one DM5403 5 1/2" W x 43 1/2" H piece to each side of the quilt.
4. Sew one CM0376 HollyBerry 1" x 41 1/2" piece to the top and bottom of the quilt.
5. Sew one DM5406 4 1/2" H x 41 1/2" W to the top of the quilt. Sew one DM5406 5 1/2" H x 41 1/2" W piece to the bottom of the quilt.
6. Following manufacturer's directions trace (3) large leaf/petals and (3) small leaf/petals onto the paper side of the fusible web. Iron onto CM0376 Asparagus. Cut out all six pieces. Repeat for SC5333 Cherry, SC5333 Watermelon, K1149, and K2149. Iron fusible web onto the back of each 3" square of CM0376 Amber and CM0376 Garland. Cut out (12) assorted circles from each. See pattern for approximate size.
7. Arrange (12) assorted red petals and (3) leaves in the lower left corner and upper right corner of the quilt as shown. Remove paper backing and fuse in place. Machine satin stitch all raw edges to finish. Add 10-12 assorted circles to the center of each flower. Fuse in place and machine applique to finish the edges. OPTIONAL: Following manufacturer's directions, use iron-on tear away stabilizer on the back of the quilt by stitching the appliques in place.
8. Layer backing, batting, and quilt top. Baste.
9. Quilt as desired.
10. Bind quilt using K2149 2 1/2" strips, pieced as needed for length.

# "Holiday Fairies Panel" Quilt

## PATTERNS



cut (3) each

CM0376 - Asparagus

SC5333 - cherry

SC5333 - watermelon

K1149 - Krystal (red)

K2149 - Krystal (dark red)

\* Merinda © 2012