

# Delightfully Frightful

debbie taylor-kerman



Finished Treat Bag: 18 1/2" x 20 1/2"

Finished Wall Hanging: 41" x 61 1/2"

**Free Pattern Sheet**



**Henry Glass & Co., Inc.**

49 West 37th Street, New York, NY 10018

tel: 212-686-5194 fax: 212-532-3525

Toll Free: 800-294-9495

[www.henryglassfabrics.com](http://www.henryglassfabrics.com)

facebook



# Delightfully Frightful

Wall Hanging & Treat Bag  
 Designs by: Cate Tallman-Evans  
 Finished Wall Hanging Size: 41" x 61 ½"  
 Finished Treat Bag Size: 18 ½" x 20 ½"

## Fabrics in the Collection



5861-33  
Orange Ghosts



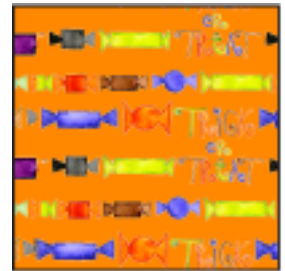
5861-99  
Black Ghosts



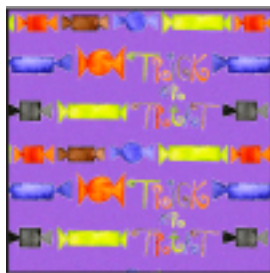
5862-33  
Orange Masks



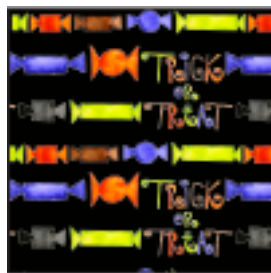
5862-99  
Black Masks



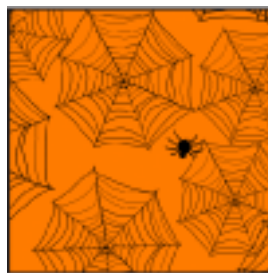
5863-33  
Orange Candy



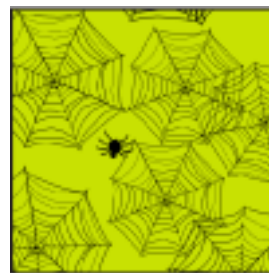
5863-55  
Purple Candy



5863-99  
Black Candy



5864-33  
Orange Spiderweb



5864-66  
Green Spiderweb



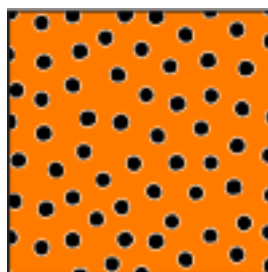
5865-33  
Orange Pumpkins



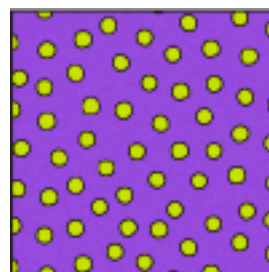
5865-55  
Purple Pumpkins



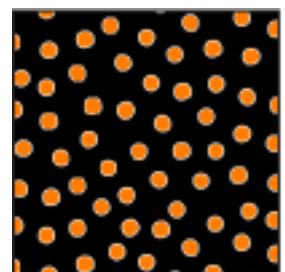
5865-99  
Black Pumpkins



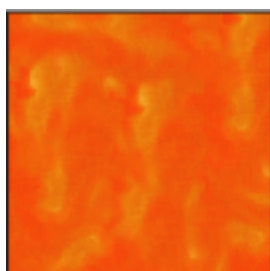
5866-39  
Orange Dot



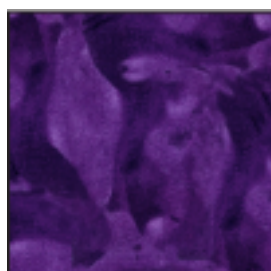
5866-56  
Purple Dot



5866-93  
Black Dot



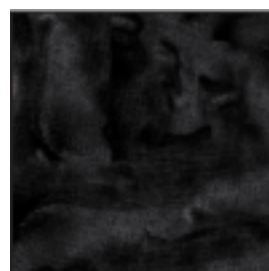
5867-33  
Orange Tonal



5867-55  
Purple Tonal



5867-66  
Green Tonal



5867-99  
Black Tonal



5868-55  
Printed Panel

# Delightfully Frightful Wall Hanging

## Materials

7/8 yard	Black Ghosts	(5861-99)
1/2 yard	Black Candy	(5863-99)
1 yard	Green Spiderweb	(5864-66) (includes binding)
3/8 yard	Purple Pumpkins	(5865-55)
1/4 yard	Purple Dot	(5866-56)
3/8 yard	Orange Tonal	(5867-33)
3/8 yard	Black Tonal	(5867-99)
2/3 yard	Printed Panel	(5868-55) (one full panel)
3 yards	Orange Spiderweb	(5864-33) (for quilt backing)

## Cutting Instructions

*Please note: all strips are cut across the width of the fabric from selvage edge to selvage edge.*

### From the black ghosts, cut:

- (4) 6 1/2" strips for the fourth border.

### From the black candy, cut:

- (3) 3" strips for the second border. Use the quilt pictured on the cover as a guide to cutting the strips so that a set of (3) printed motif stripes is centered in each strip.

### From the green spiderweb, cut:

- (6) 2 1/4" strips for the binding.  
(12) 1 1/2" strips.

### From the purple pumpkins, cut:

- (1) 6 1/2" strip. Recut into (4) 6 1/2" x 6 1/2" squares and (4) 3" x 3" squares.

### From the purple dot, cut:

- (1) 2" strip. Recut into (7) 2" x 2" squares and (14) 1 1/2" x 2" pieces.

### From the orange tonal, cut:

- (3) 2" strips. Recut into (4) 2" x 7", (3) 2" x 5", (7) 2" x 3 1/2", and (28) 1 1/2" x 2" pieces.

### From the black tonal, cut:

- (1) 2" strip. Recut into (6) 2" x 2" squares.  
(3) 1 1/2" strips. Recut into (28) 1 1/2" x 1 1/4", (28) 1 1/2" x 1 1/8" and (28) 1 1/2" x 1" pieces.

### From the printed panel, cut:

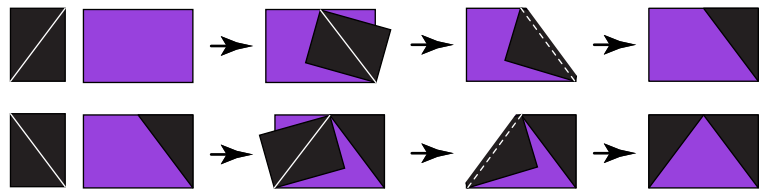
- (2) 15 1/2" wide x 17 1/2" high pieces with the witches head and witches hat motifs centered in the two pieces.

## Sewing Instructions

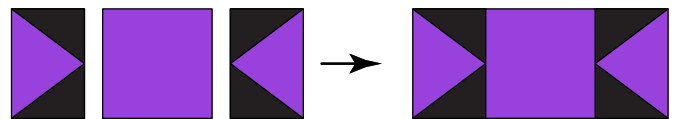
*All seams are sewn using 1/4" seam allowance with pieces held right sides together and raw edges even.*

1. Draw diagonal lines on the wrong side of (2) 1 1/2" x 1 1/4" black tonal pieces. Right sides together, layer one marked black piece with a 1 1/2" x 2" purple dot piece, right sides together. Sew on the marked line. Trim 1/4" beyond the seam line and press the

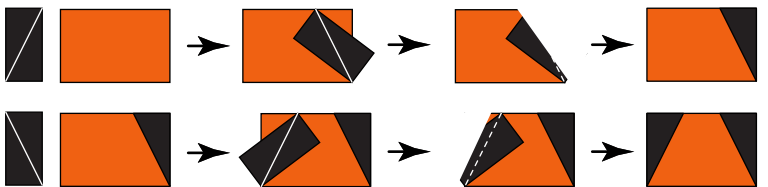
1. (cont.) resulting black triangle up as shown. Repeat the procedure for the opposite end of the purple dot piece to make (1) purple dot end unit. Repeat to make a second unit.



2. Stitch the purple dot end units from step 1 to opposite sides of a 2" purple dot square, noting orientation.



3. Repeat steps 1 and 2 to make a total of (7) purple dot candy units.
4. Repeat the procedure from step 1, using 1 1/2" x 1" black tonal and 1 1/2" x 2" orange tonal pieces to make (1) small orange end unit as shown below. Please note that the black pieces do not meet in the middle of the orange rectangle. Repeat to make a total of (14) units. Stitch (2) end units to the short sides of (1) 2" x 3 1/2" orange tonal piece to make (1) small orange candy unit. Repeat to make a total of (7) small orange candy units.



5. Repeat the procedure from step 4 using 1 1/2" x 1 1/8" black tonal and 1 1/2" x 2" orange tonal pieces to make (1) large/medium orange end unit. Repeat to make a total of (14) large/medium orange end units. Stitch (2) end units to the short sides of a 2" x 7" orange tonal piece to make (1) large orange candy unit. Repeat to make a total of (4) large orange candy units. Repeat this procedure using the 2" x 5" orange tonal pieces to make a total of (3) medium candy units.

## Wall Hanging Assembly

6. Stitch large and small orange candy units to each short end of a purple dot candy unit. Repeat to make a total of (4) units. Stitch these units to the left and right sides of the trimmed printed panel pieces, noting orientation as shown in the project pictured on the cover.
7. Stitch medium and small orange candy units to each short end of a purple dot candy unit. Stitch a 2" x 2" black tonal square to each end of the row of candy units. Repeat to make a total of (3) rows. Stitch together these rows and the rows from step 6, alternating the two types of units and orienting the candy rows as shown in the project pictured on the cover.
8. Trim (2) 1 1/2" green spiderweb strips to 39" long and cut a third strip into (2) 20 1/2" lengths (if your measurements are different, cut to fit your quilt top). Sew the longer pieces to the left and right sides of the quilt top. Sew the shorter pieces to the top and bottom.

# Delightfully Frightful

## Wall Hanging (cont.)

9. Trim (2) 3" black candy strips to 41" long and cut a third strip into (2) 20 1/2" lengths (*if your measurements are different, cut to fit your quilt top*). Sew the longer pieces to the left and right sides of the quilt top. Stitch 3" purple pumpkins squares to each end of the (2) shorter black candy pieces. Sew these borders to the top and bottom.

10. Trim the selvages from the remaining 1 1/2" green spiderweb strips and sew the strips together end to end to make a long 1 1/2" strip. From this long strip, cut (2) 46" and (2) 27 1/2" lengths (*if your measurements are different, cut to fit your quilt top*). Sew the longer pieces to the left and right sides of the quilt top. Sew the shorter pieces to the top and bottom.

11. Trim the selvages from the 6 1/2" black ghosts strips and sew these strips together end to end to make a long 6 1/2" strip. From this long strip, cut (2) 48" and (2) 27 1/2" lengths (*if your measurements are different, cut to fit your quilt top*). Sew the longer pieces to the left and right sides of the quilt top. Stitch 6 1/2" purple pumpkins squares to each end of the (2) shorter black ghosts pieces. Sew these pieced borders to the top and bottom.

12. From the unused portion of the long 1 1/2" green spiderweb strip made in step 10, cut (2) 60" and (2) 41 1/2" lengths (*if your measurements are different, cut to fit your quilt top*). Sew the longer pieces to the left and right sides of the quilt top. Sew the shorter pieces to the top and bottom.

13. Layer the completed wall hanging with batting and backing and quilt as desired.

14. Bind using the 2 1/4" green spiderweb strips.

## Treat Bag

### Materials

3/4 yard	Orange Tonal	(5867-33)
1/4 yard	Black Tonal	(5867-99)
2/3 yard	Printed Panel	(5868-55)
	<i>(one full panel)</i>	

### Cutting Instructions

**Please note: all strips are cut across the width of the fabric from selvage edge to selvage edge.**

#### From the orange tonal, cut:

(2) 19" wide x 21" high pieces for the bag lining.

#### From the black tonal, cut:

(4) 1 1/2" strips for the bag handles.

Trim each strip to 24 1/2".

#### From the printed panel, cut:

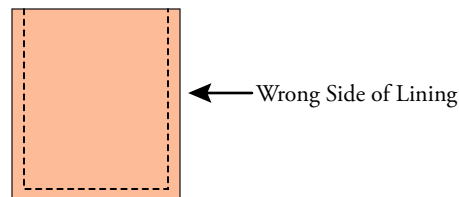
(2) 19" wide x 21" high pieces with the witches head and witches hat motifs centered in the two pieces.

## Treat Bag (cont.)

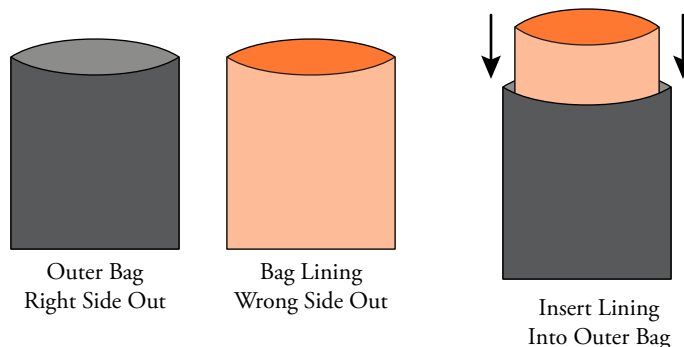
### Sewing Instructions

**All seams are sewn using 1/4" seam allowance with pieces held right sides together and raw edges even.**

1. Right sides together, sew the orange tonal pieces together along three sides. Repeat for the printed panel pieces, making sure to leave the edge at the top open. Turn only the printed panel unit right side out.



2. Press 1/4" to the wrong side around the open edge of both the lining and outer bag units. Slip the lining inside the outer bag and pin the lining and outer bag together all around the upper edge.



3. Right sides together, layer (2) black tonal strips together. Stitch along each long side, leaving the short ends open. Turn right sides out. Repeat to make a second strap.



4. Slip the ends of each strap between the lining and outer bag, centering each strap along one side and making sure to leave at least 1/4" between the end of each strap and the upper edge of the lining and outer bag. Machine stitch the outer bag to the lining all around the upper edge, as close to the top as possible and catching only the ends of each strap in the seam. Stitch the seam again for extra strength. If you prefer, the lining can be slip stitched by hand to the outer bag with the ends of the straps placed and sewn exactly as they are for machine stitching.

