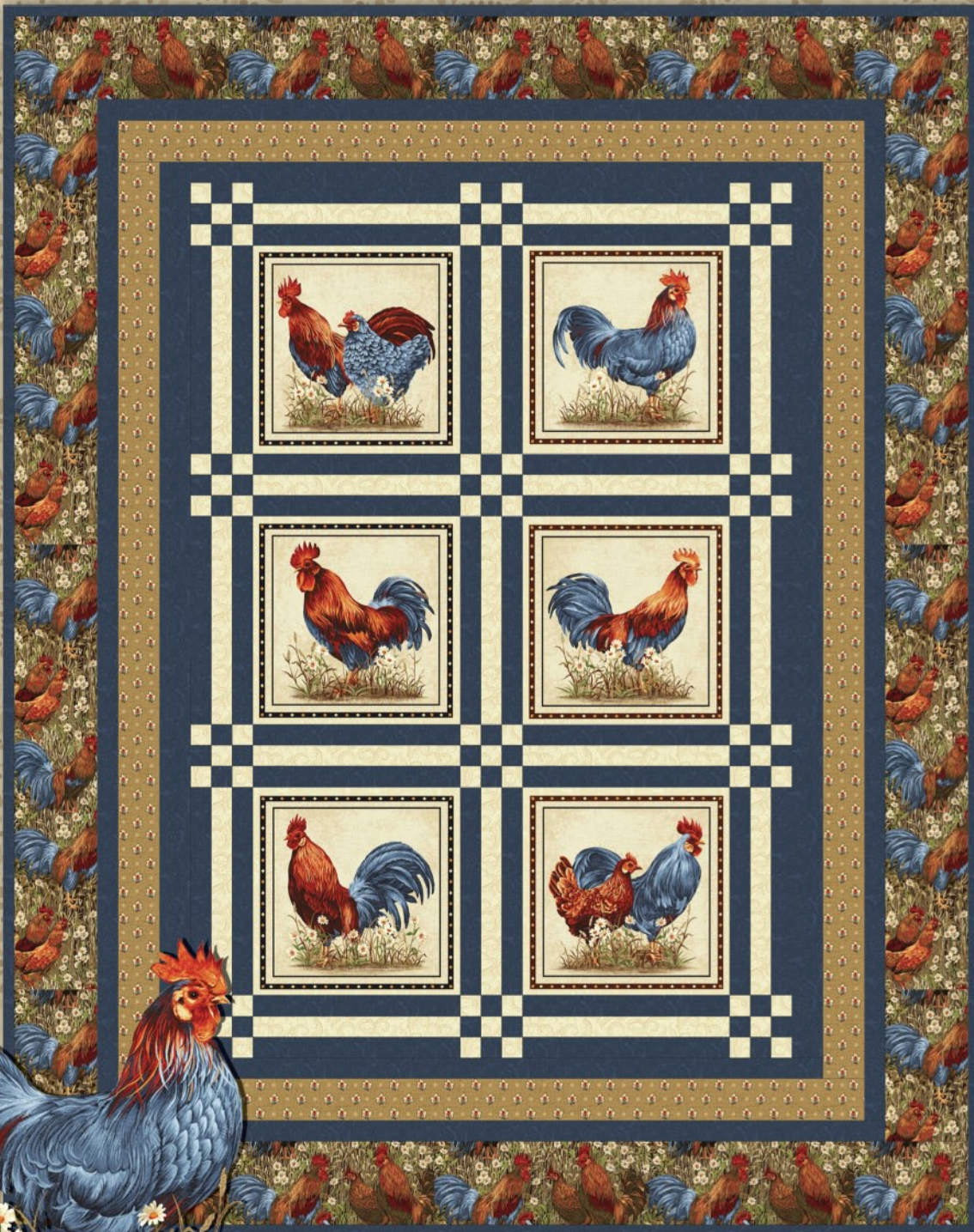


All Cooped Up

BY DIANE NAGLE

© 2011 Diane Nagle for Benartex, LLC



Using fabric with fine details and rich colors, this quilt is a beautiful tribute to the ever popular rooster.

Uses *Rooster Fields* collection.

FINISHED SIZE: 46" x 58"

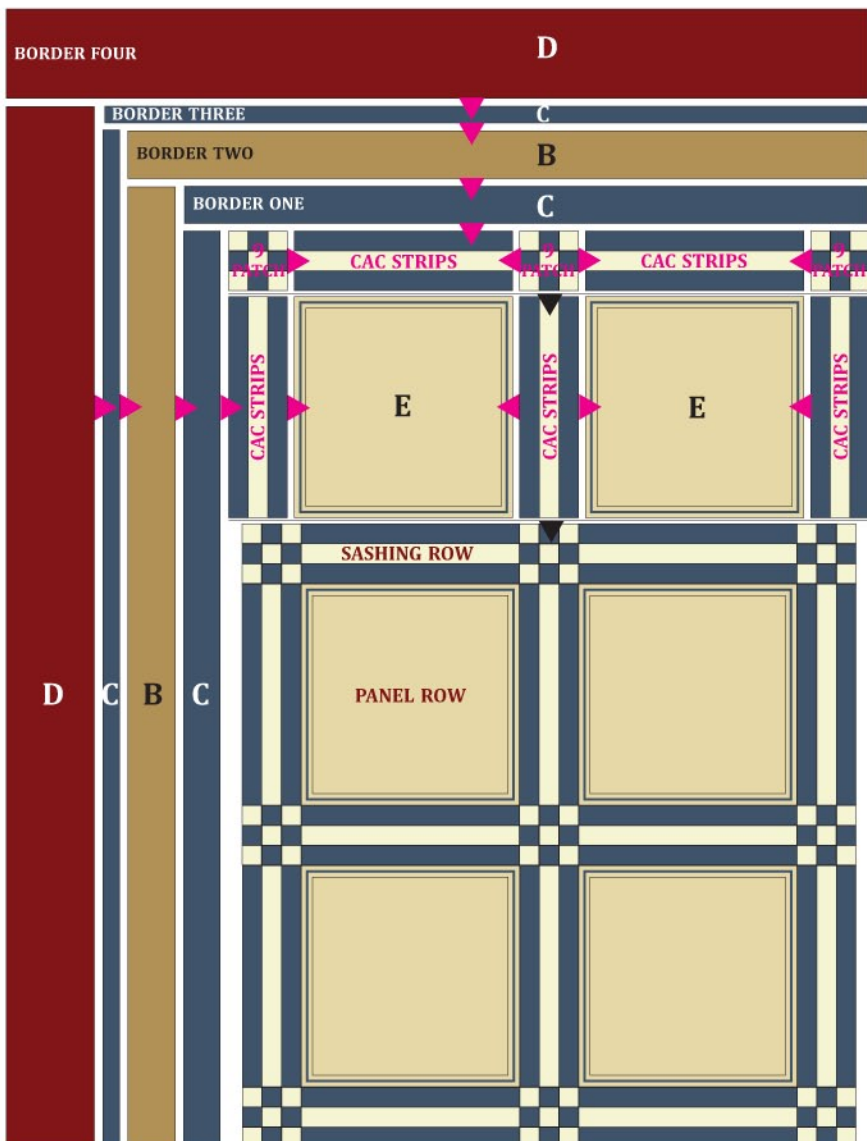
Benartex

Fabric for quilters. By quilters.

SAMPLE	KEY/SKU	QTY	CUT
A	Napa Swirl 1225-07 <i>Light Sand</i>	1/2 YD	(8) 1-1/2" x WOF strips.
B	Sonoma 1224-70 <i>Tan</i>	3/8 YD	(5) 2-1/2" x WOF strips. *subcut (2) 2-1/2" x 44-1/2" strips. (2) 2-1/2" x 36-1/2" strips.
C	Aurora 1222-55 <i>Blue</i>	1-1/2 YD	(13) 1-1/2" x WOF strips. (5) 1-1/2" x WOF strips, *subcut (2) 1-1/2" x 48-1/2" strips. (2) 1-1/2" x 38-1/2" strips. (2) 2" x 42-1/2" strips. (2) 1-1/2" x 32-1/2" strips. (5) 2-1/2" x WOF strips; BINDING.
D	Rooster Fields 1221-11 <i>Blue/Red</i>	1 YD	(5) 4-1/2" x WOF strips, *subcut (2) 4-1/2" x 50-1/2" strips. (2) 4-1/2" x 46-1/2" strips.
E	Rooster Fields Panel 1220-07 <i>Sand Multi</i>	1 Panel (24")	FUSSY CUT: (6) 10-1/2" squares.

*SEW STRIPS VIA SHORT ENDS, THEN SUBCUT AS INDICATED | WOF=WIDTH OF FABRIC

QUILT DIAGRAM



SASHING ASSEMBLY

1. CAC SASHING STRIPS: Sew (5) A 1-1/2" x WOF strips via short ends. Repeat with (5) C 1-1/2" x WOF strips. Make 2 C strip sets. Then sew A strip between C strips, via long edge. Subcut (17) 3-1/2" x 10-1/2" CAC SASHING STRIPS. Set aside.

2. ACA UNIT: Sew (1) C 1-1/2" x WOF strip between (2) A 1-1/2" x WOF strips. Subcut (24) 1-1/2" x 3-1/2" ACA STRIPS (2.).

3. CAC UNIT: Repeat step 2. using (1) A 1-1/2" x 3-1/2" WOF strips and (2) C 1-1/2" x WOF strips. Subcut (12) 1-1/2" x 3-1/2" CAC STRIPS (3.).

4. 9-PATCH BLOCK: Sew (1) CAC UNIT between (2) ACA units into a 9-PATCH BLOCK. Square to 3-1/2". Make 12 AC 9-PATCH BLOCK.

QUILT ASSEMBLY

5. SASHING ROWS: Take (3) 9-PATCH BLOCKS and (2) CAC SASHING STRIPS and sew together, as shown in QUILT DIAGRAM. Make 4 SASHING ROWS. Set aside.

6. PANEL ROWS: Take (3) CAC SASHING STRIPS and (2) A 10-1/2" squares and sew together, as shown in QUILT DIAGRAM. Make 3 PANEL ROWS. Refer to QUILT PHOTO for proper placement of A ROOSTERS.

7. QUILT TOP: Sew (4) SASHING ROWS and (3) PANEL ROWS together via long edge, as shown in QUILT DIAGRAM. Refer to QUILT PHOTO for proper placement of PANEL ROWS.

BORDER ASSEMBLY

8. BORDER ONE: Sew (1) C 2" x 42-1/2" strip to each side of quilt top. Then sew (1) C 1-1/2" x 32-1/2" strip to top and bottom of quilt top.

9. BORDER TWO: Sew (1) B 2-1/2" x 44-1/2" strip to each side of quilt top. Then sew (1) B 2-1/2" x 36-1/2" strip to top and bottom of quilt top.

10. BORDER THREE: Sew (1) C 1-1/2" x 48-1/2" strip to each side of quilt top. Then sew (1) C 1-1/2" x 38-1/2" strip to top and bottom of quilt top.

11. BORDER FOUR: Sew (1) D 4-1/2" x 50-1/2" strip to each side of quilt top. Then sew (1) D 4-1/2" x 46-1/2" strip to top and bottom of quilt top.

FINISHING Cut batting and backing 3" larger than top on all sides. Layer backing, batting and top together and baste or pin. When quilting is completed, trim excess batting and backing. Bind as usual.

FINISHED SIZE: 46" x 58"

Note: If this Benartex pattern is included in a kit, any questions about the kit should be addressed to the vendor from whom you bought it.