

Catberry Tails

a collection by
Debra Mason

Catberry Tails patterns
used in this quilt:



ADM-4190-1 LIME



ADM-4196-3 RED



ADM-4188-1 SKY

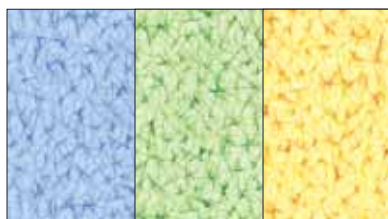
ADM-4188-3 LIME



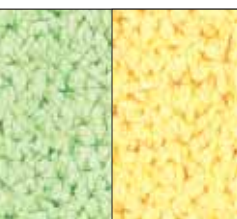
ADM-4185-3 RED



ADM-4185-4 GREEN



ADM-4186-2
SKY



ADM-4186-5
LIME



ADM-4186-7
CANARY



ADM-4187-1 ROYAL



ADM-4189-2 CANARY



ADM-4189-4 RED

All patterns are shown approx. 1/4 actual size.

ROBERT KAUFMAN
F A B R I C S



ADM-4193-1 RED



ADM-4194-4 ROYAL

Catberry Tails

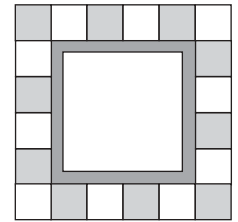
Quilt designed, assembled and quilted by Heidi Pridemore
FINISHED QUILT SIZE: approx. 47" x 56"

FABRIC REQUIREMENTS:

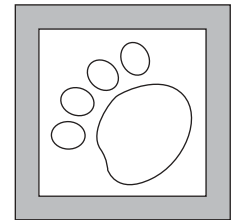
Center Panel	ADM-4190-1 Lime	¾ yd.
Block A Center #1	ADM-4196-3 Red	¾ yd.
Block A Center #2	ADM-4189-4 Red	¼ yd.
Block A Center #3	ADM-4193-1 Red	¼ yd.
Block A Frames	ADM-4185-4 Green	1 ¾ yds.
Center Frame		
Inner Border		
Binding		
Checkerboard	ADM-4187-1 Royal	¾ yd.
Checkerboard	ADM-4186-7 Canary	¾ yd.
Daisy Centers		
Block B Backgrounds	ADM-4186-2 Sky	½ yd.
Block B Borders	ADM-4185-3 Red	¾ yd.
Daisies		
Block B Paw #1	ADM-4188-3 Lime	¼ yd.
Block B Paw #2	ADM-4189-2 Canary	¼ yd.
Block B Paw #3	ADM-4194-4 Royal	¼ yd.
Daisy Backgrounds	ADM-4186-5 Lime	¼ yd.
Outer Border	ADM-4188-1 Sky	¾ yd.
Fusible Web		1 yd.

CUTTING:

one 16½" x 25½"
two 5½" squares (center on cats)
three 5½" squares (center on cats)
two 5½" squares (center on cats)
fourteen 1" x 5½", fourteen 1" x 6½"
two 1½" x 25½", two 1½" x 18½"
two 2" x 45½", two 2" x 39½"
six 2¼" x WOF
four 2" x WOF
four 2" x WOF
eight Centers (trace pattern provided)
seven 7½" squares
fourteen 1" x 5½", fourteen 1" x 6½"
eight Daisies (trace pattern provided)
two Paws (center pad pattern on cats)
three Paws (center pad pattern on cats)
two Paws (center pad pattern on cats)
eight 4½" squares
four 4½" x 22½" cut lengthwise for side borders
four 4½" x 18" cut crosswise for top/bottom borders



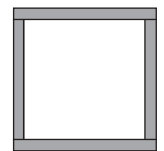
BLOCK A



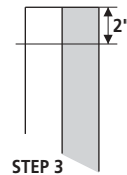
BLOCK B

BLOCK A: Make seven.

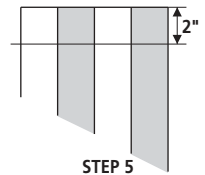
1. Sew one 1" x 5½" green frame to each side of all seven Block A centers. Sew one 1" x 6½" green frame to the top and bottom of all Block A Centers.
2. Sew one yellow checkerboard strip to one blue checkerboard strip. Repeat with the remaining yellow and blue strips to make four two-strip sets.
3. Cut fourteen 2" segments from one two-strip set and set aside.
4. Sew two two-strip sets together to create a four-strip set. Sew the shorter two-strip set from Step 3 to the fourth two-strip set, and trim the extra length to create a short four-strip set.
5. Cut twenty-eight 2" segments from the four-strip sets.
6. Sew one four-block segment from Step 5 to each side of all framed Block A centers, alternating colors as shown. You should have fourteen four-block segments left.
7. Sew one two-block segment from Step 3 to one end of each of the fourteen four-block segments from step 6, alternating colors, to create fourteen six-block segments.
8. Sew the six-block segments to the top and bottom of all Block As, alternating colors.



STEP 1



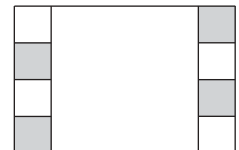
STEP 3



STEP 5

BLOCK B: Make seven.

9. Trace seven Paws, eight Daisies, and eight Daisy Centers onto the paper side of the fusible web. Set the Daisies and Daisy Centers aside.
10. Following the fusible web instructions: Iron the paper Paws onto the back of the Paw fabrics. Fuse the fabric Paws onto the Block B Backgrounds. Finish the Paw edges with satin or buttonhole stitches.
11. Sew one 1½" x 7½" red border to each side of all seven Block B Centers.
12. Sew one 1½" x 9½" red border to the top and bottom of all Block Bs.



STEP 6



STEP 7

QUILT ASSEMBLY: Refer to the quilt photo.

13. Sew one 1½" x 25½" green frame to each side of the Center Panel.
14. Sew one 1½" x 18½" green frame to the top and bottom of the Center Panel.
15. Sew two Block As to the top and bottom of one Block B to create the right side row. Sew to the right side of the Center Panel.
16. Sew two Block Bs to the top and bottom of one Block A to create the left side row. Sew to the left side of the Center Panel.
17. Sew two Block As and two Block Bs together, alternating them A-B-A-B to create the top row. Repeat with the remaining Blocks A and B to create the bottom row. Sew these rows to the top and the bottom of the Center Panel.
18. Sew one 2" x 45½" green Inner Border to each side of the quilt top.
19. Sew one 2" x 39½" green Inner Border to the top and bottom of the quilt top.
20. Fuse the Daisies and Centers from Step 9 to the green Daisy Backgrounds. Finish the edges with satin or buttonhole stitches.
21. Sew two 4½" x 22½" side Outer Borders to the top and bottom of one Daisy block to make one side border. Repeat to make the other side border.
22. Sew the side Outer Borders to the quilt top.
23. Sew one Daisy block to each end of one 4½" x 18" top/bottom Outer Border. Sew another 4½" x 18" top/bottom border to a Daisy block on one end. Add one more Daisy block to create the top border. Repeat to create the bottom border.
24. Sew the top and bottom Outer Borders to the quilt top.
25. Layer, quilt, and bind as desired.