

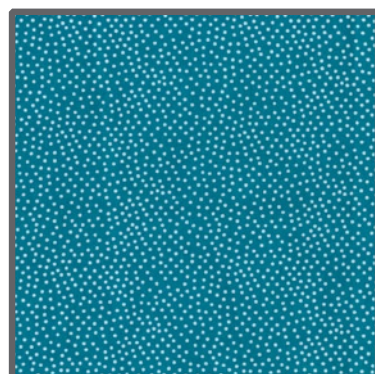
FABRIC REQUIREMENTS



**CX4642 Sky
Snowman's Land**
1 1/2 yards



**CX4643 Multi
Stocking Stuffer**
3/8 yard



**CX1065 Lagoon
Garden Pindot**
1/2 yard



**CX4644 Sky
Snowfall**
3/4 yard



**CX4644 Turquoise
Snowfall**
Fat 1/4



**K4165
Krystal**
7/8 yard

54" Batting & 54" Backing

Snowman in the Window



Size: Approximately 50"W x 50"H

Quilt designed by Marinda Stewart
Skill Level : Confident Beginner



118 West 22nd Street 5th Floor New York, NY 10011
Tel: 212.704.0774 Fax: 212. 633. 0272 email: info@michaelmillerfabrics.com

www.michaelmillerfabrics.com

"Snowman in the window"

Quilt by Marinda Stewart

Size: 50" W x 50" H - Skill Level: Confident Beginner

Materials

Fabric	Yardage	Cutting
* CX4642 Sky Snowman's Land	1 1/2 yards	(2) 2 1/2" W x 50 1/2" H - Cut Vertically **(2) 2 1/2" H x 46 1/2" W - Cut Horizontally (16) 6 1/2" Squares
CX4644 Sky Snowfall	3/4 yard	(40) 2 1/2" x 8 1/2"
CX1065 Lagoon Garden Pindot	1/2 yard	(16) 2 1/2" x 8 1/2" ** (2) 1" x 45 1/2" ** (2) 1" x 46 1/2"
K4165 Krystal	7/8 yard	(16) 2 1/2" x 8 1/2" (2) 1" x 42 1/2" (2) 1" x 43 1/2" (5) 2 1/2" x W.O.F.
CX4643 Multi Stocking Stuffer	3/8 yard	(2) 1 1/2" x 43 1/2" **(2) 1 1/2" x 45 1/2"
CX4644 Turquoise Snowfall	Fat 1/4	(25) 2 1/2" squares
* One Way Print ** Piece as needed for length		
Also Needed: 54" x 54" Backing, 54" x 54" Batting, Threads to match, Straight Pins, Scissors, Acrylic Ruler, Rotary Cutter, and Mat.		

Disclaimers

This pattern is provided as a courtesy to quilt stores, catalogs, and quilters. Michael Miller Fabrics, LLC is not responsible for the accuracy of any kits packaged to accompany this pattern. Please direct any inquiries to the kit maker.

Yardage requirements for this pattern may allow for excess yardage to accommodate specific placement of motifs or to allow for any fussy-cutting to achieve the finished quilt design.

While every attempt has been made to give accurate measurements, yardage requirements, and construction directions; this does not allow personal variations in measuring, cutting, and or sewing. The enclosed directions were used in the construction of the original quilt.

Directions

1. Sew one CX1065 2 1/2" x 8 1/2" piece to the left side of one CX4642 6 1/2" square. Align the top edges. Sew the seam to within 1/4" of the bottom. Repeat for the bottom edge using K4165 2 1/2" x 8 1/2" piece. Aligning the outside right edges.
Miter the lower left hand corner to finish the block. Make (16) total.
2. To assemble sashing - begin and end with a CX4644 Turquoise 2 1/2" square alternate with (4) CX4644 Sky 2 1/2" x 8 1/2" pieces to make one 2 1/2" x 42 1/2" strip. Make (5) rows total. Begin with one 2 1/2" x 8 1/2" CX4644 Sky piece and alternate with (4) 8 1/2" blocks ending with a CX4644 Sky piece. Make (4) rows total.
3. Begin and end with a 2 1/2" sashing row and alternate with a block row to make a 42 1/2" square quilt top.
4. Sew one K4165 1" x 42 1/2" piece to the top and bottom of the quilt. Sew one K4165 1" x 43 1/2" strip to each side.
5. Sew one CX4643 1 1/2" x 43 1/2" piece to the top and bottom of the quilt. Sew one CX4643 1 1/2" 45 1/2" (pieced for length) piece to each side.
6. Sew one CX1065 1" x 45 1/2" pieced strip to the top and bottom of the quilt. Sew one K4165 1" x 46 1/2" pieced strip to each side of the quilt.
7. Sew one CX4642 2 1/2" x 46 1/2" horizontal pieced strip to the top and bottom of the quilt. Sew one CX4642 2 1/2" x 50 1/2" vertical strip to each side.
8. Layer backing, batting, and quilt top. Baste.
9. Quilt as desired.
10. Bind quilt using K4165 2 1/2" strip pieced as needed for length.