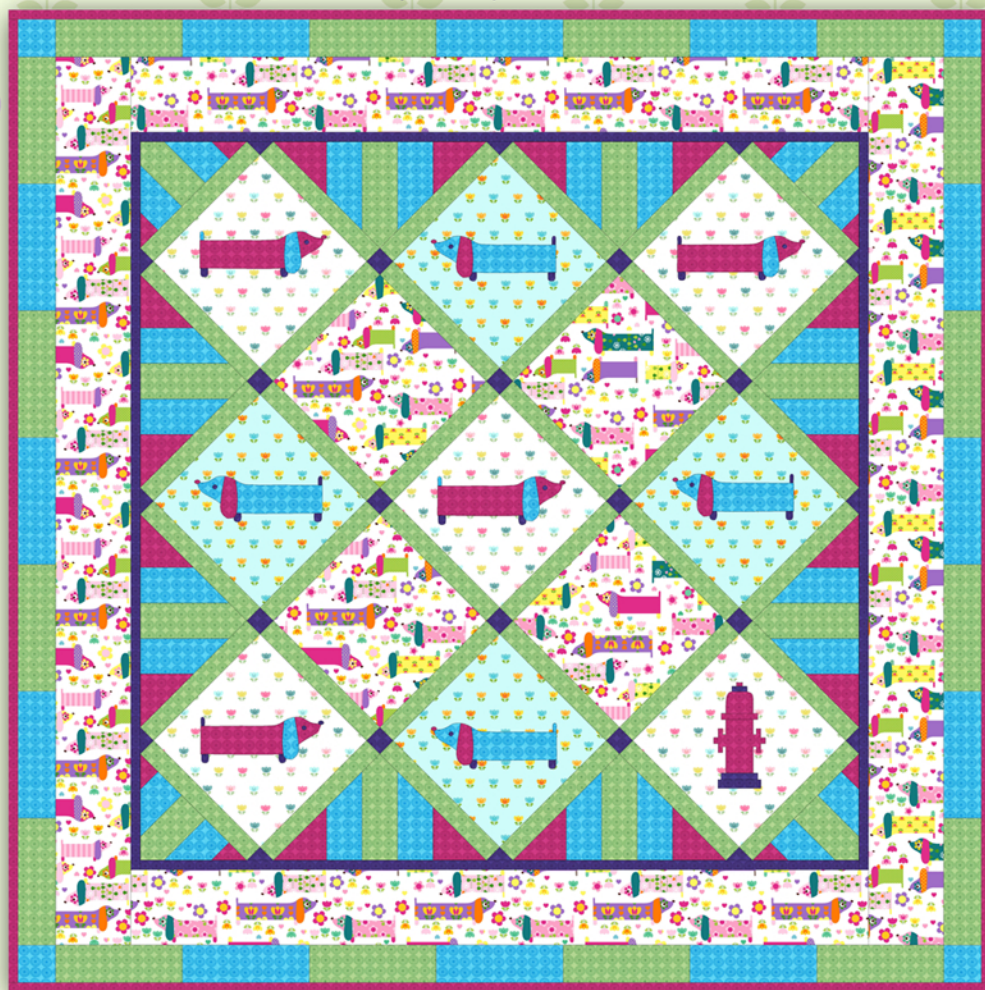


# 'HOT DOGS'

Collection by Hoffman California Fabrics

Quilt Project by Vicki Stratton



Quilt Size 52" x 52"

Free Quilt Pattern available from [www.HoffmanFabrics.com](http://www.HoffmanFabrics.com)

Style	
H4020 Spring #145	1 yd
H4021 White #3	½ yd
H4021 Sky #16	⅓ yd
H8708 Lime #71	⅞ yd
H8708 Fuchsia #23	¾ yd *
H8708 Purple #14	¼ yd
H8708 Turquoise #61	¾ yd

\* Includes binding

Quilt backing in your choice of fabric: 3 ¼ yard



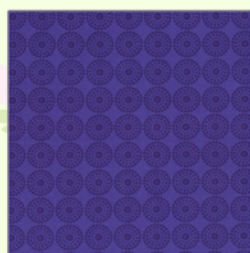
S# H4020 Spring #145



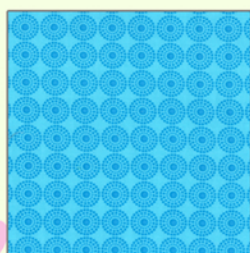
S# H4021 White #3



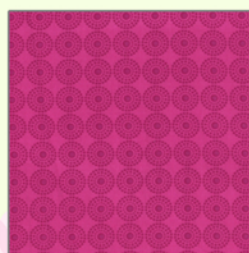
S# H4021 Sky #16



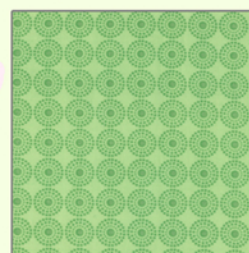
S# H8708 Purple #14



S# H8708 Turquoise #61



S# H8708 Fuchsia #23



S# H8708 Lime #71

# Happy Hot Dogs

By

Quilting Time

[www.Quilting-Time.com](http://www.Quilting-Time.com)

52" x 52" Quilt (8 ½" blocks)

Cut 2 – 8 ½" strips white flower fabric, cut into 5 – 8 ½" squares  
Cut 1 – 8 ½" strip aqua flower fabric, cut into 4 – 8 ½" squares  
Cut 1 – 8 ½" strip white focal fabric, cut into 4 – 8 ½" squares  
Cut 6 – 2 ½" strips lime (setting triangles and outside border)  
Cut 8 – 1 ½" strips lime, cut into 36 – 1 ½" x 8 ½" strips (sashing)  
Cut 6 – 2 ½" strips turquoise (setting triangles and outside borders)  
Cut 1 – 5" strip fuchsia, cut into 8 - 5" squares (setting triangles)  
Cut 1 – 3 ½" strip fuchsia, cut into 4 – 3 ½" squares  
Cut 1 – 1 ½" strip purple, cut into 24 – 1 ½" squares (sashing)  
Cut 4 – 1" strips purple (inner border)  
Cut 5 – 4 ½" strips focal fabric (2<sup>nd</sup> border)  
Cut 5 – 2 ½" fuchsia (binding)

## Appliqué

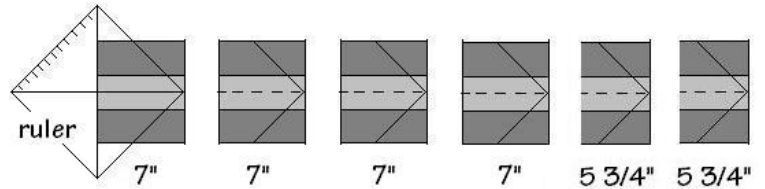
1. Tape template page on a light box or over window. Tape fusible web over top of template page. Trace 4 of each of the dog parts. FLIP OVER TEMPLATE PAGE and trace four more of each of the parts. Trace 1 each of the hydrant parts.
2. Remove the paper off the side that doesn't have your tracing on it. Fuse onto the wrong side of the selected fabrics. Make 4 fuchsia dogs with turquoise ears and 4 turquoise with fuchsia ears. All have purple eyes, nose, feet and tail.
3. Fold and press white and aqua flower squares in half DIAGONALLY in BOTH directions to make guide lines for placement of appliqué pieces. See color photo to place dogs.
4. Center dogs over guidelines. Fuse into place according to fusible web directions.
5. Stitch around all pieces with a straight stitch or blanket stitch. Use either a black thread to highlight dogs and hydrant or a matching thread to blend.

## Striped setting triangle (ALL SEAM ALLOWANCES TO BE ¼")

1. Sew a 2 ½" turquoise strip to both sides of a 2 ½" lime strip. Press toward lime. Sew two of these strip sets.

2. With ruler and cutter, cut 4 – 7" sections and 2 – 5 ¾" sections from each strip unit.

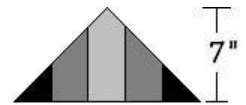
3. Align center line of squaring ruler over center of lime strip. Cut 8 partial triangles as shown. Cut 4 – 5 ¾" partial triangles for the corners.



4. Cut 8 - 5" fuchsia squares in half

DIAGONALLY corner to corner in ONE direction to yield 16 triangles.

5. Sew fuchsia triangles to the partial triangles cut in step 3 to complete setting triangles.



6. Cut 4 – 3 ½" fuchsia squares in half DIAGONALLY corner to corner in one direction to yield 8 triangles.

7. Sew triangles to both sides of 5 ¾" partial triangles cut in step 3. These are the four corner blocks of the quilt.



## Sashing

1. Sew a 1 ½" lime sashing strip to OPPOSITE SIDES OF ALL APPLIQUE blocks.

2. Sew 1 ½" purple square to both ends of a 1 ½" lime sashing strip. Sew 2.

Sew 2 with 3 lime strips and 4 purple squares

Sew 2 with 5 lime strips and 6 purple squares.

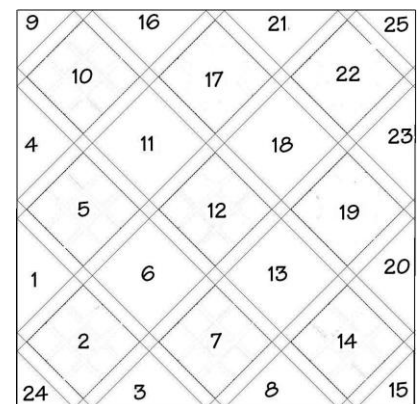


NOTE: 1 ½" purple sashing squares will be trimmed to triangles after quilt assembly.

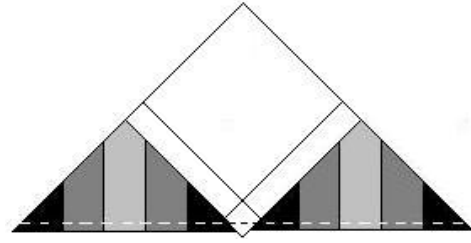
## Quilt Assembly

Refer to color photo to lay out blocks and sashing strips.

1. Blocks are laid out "on point" and quilt is assembled in diagonal rows. Sew rows together in the sequence indicated in the diagram.
2. Pin and sew sashing strips between rows. Press.



- Trim quilt square. BE SURE TO LEAVE  $\frac{1}{4}$ " SEAM ALLOWANCE as shown in diagram. Purple squares will be trimmed to become triangles.



## Borders

- Measure width of your quilt and cut inner top and bottom  $1\frac{1}{2}$ " purple inner border to that measure. Pin, sew and press.
- Measure length of quilt and cut inner side borders to that measure. Pin, sew and press on borders.
- Sew  $4\frac{1}{2}$ " border strips together end to end.
- Repeat step 1 and 2 border process with  $4\frac{1}{2}$ " border strips.
- For the last pieced border to fit, the quilt should measure  $47\frac{5}{8}" \times 47\frac{5}{8}"$ . If it's larger, trim the borders. If it's smaller you'll have to increase the size of the seam allowance SLIGHTLY (in step 6) to make the last border fit your quilt.
- From remaining  $2\frac{1}{2}"$  lime and turquoise strips, cut 16 -  $2\frac{1}{2}" \times 7\frac{1}{4}"$  lime, cut 12 -  $2\frac{1}{2}" \times 7\frac{1}{4}"$  turquoise and 4 -  $2\frac{1}{2}" \times 2\frac{1}{2}"$  turquoise squares
- For each border, sew 4 -  $2\frac{1}{2}" \times 7\frac{1}{4}"$  lime pieces alternately with 3 -  $2\frac{1}{2}" \times 7\frac{1}{4}"$  turquoise pieces together as shown in color photo. Check to make sure size is correct for your quilt top. Pin and sew on top and bottom borders. Press.
- Sew  $2\frac{1}{2}"$  turquoise squares to both ends of remaining borders strips. Pin, sew and press on side borders.

## Quilting and Binding

- Sew backing pieces together. Quilt as desired.
- Sew short ends of binding strips together. Press in half lengthwise.
- Sew to front of quilt. Turn to back and stitch in place.

**Hot dog & fire hydrant templates  
copyright 2010 Vicki Stratton**

